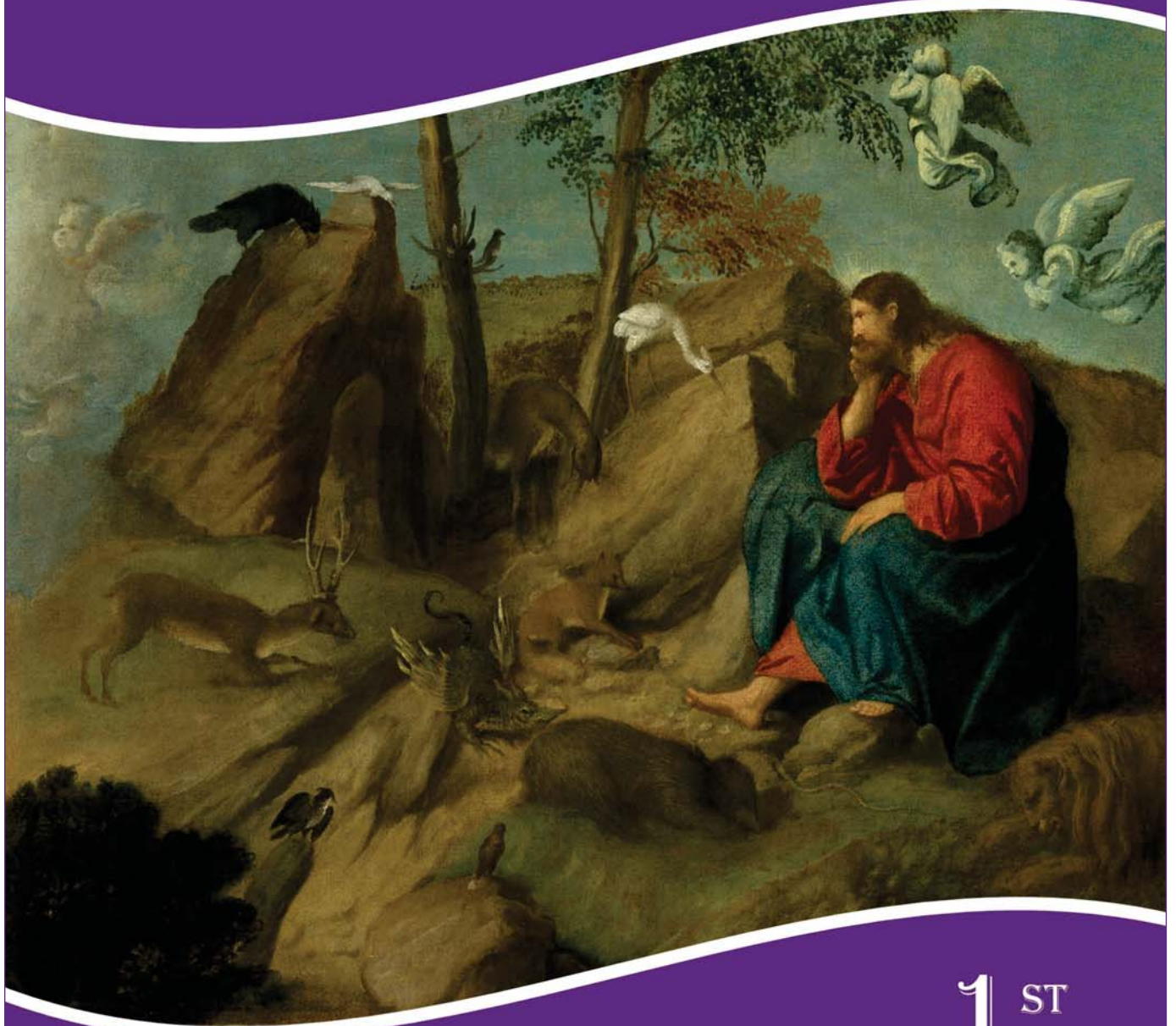


Our Lady of Hope & Saint Paul Parishes

February 18, 2024



THE TEMPTATION OF JESUS

The Spirit drove Jesus out into the desert, and he remained in the desert for forty days, tempted by Satan. He was among wild beasts, and the angels ministered to him. Mark 1:12-13

1ST

SUNDAY
OF LENT

OUR LADY OF HOPE / SAINT PAUL DIRECTORY

OUR LADY OF HOPE PARISH

1 Pineswamp Road
Ipswich, MA 01938
978-356-3944

WEBSITE: www.ourladysaintpaul.org

EMAIL ourlady@ourladysaintpaul.org



Handicap Parking and ramp into the church is located on Pineswamp Road on right side of Church .

SAINT PAUL PARISH

50 Union Street
South Hamilton, MA 01982
978-468-2337

WEBSITE: www.ourladysaintpaul.org

EMAIL: stpaul@ourladysaintpaul.org



Elevator for Handicapped Access to the Saint Paul church is located in the rear of the building.

WEEKEND MASS SCHEDULE

SATURDAY:

4:00 pm: Our Lady of Hope (OLOH)

SUNDAY:

7:30 am: Saint Paul (SP) ~ No Music

9:30 am: Saint Paul (SP)

11:15 am: Our Lady of Hope (OLOH)

WEEKDAY MASS SCHEDULE

9:00 am: Monday & Tuesday (OLOH)

9:00 am: Thursday & Friday (SP)

SACRAMENTS

RECONCILIATION

SATURDAYS 3:00—3:45 PM at Our Lady of Hope or by appointment at either church.

BAPTISM

If you are planning a baptism in the future, please call the parish office to make arrangements.

MARRIAGE

If you are an engaged couple, please call Fr. Brogan *directly* at *least* 6 months prior to the intended date.

PASTORAL VISITATION: The Eucharist and the Anointing of the Sick can be brought to our parishioners confined to their homes.

OCIA & FAITH FORMATION

Questions regarding current, upcoming programs and/or sacramental programs available at our parishes, please contact the parish office.



Hearing Assist Boxes are available at Our Lady of Hope. Let the Priest know if you would like one before Mass when attending Mass at OLOH.

NEW TO OUR PARISH?

If you are new to Our Lady of Hope or Saint Paul, please introduce yourself to Fr. Brogan following Mass. To formally register at one of our parishes, contact the parish office or go online to register through our website.

PARISH STAFF

PASTOR: Fr. David A. Brogan

PRIEST IN RESIDENCE: Fr. John G. Kiley

MUSIC MINISTER:

John Maher 978-500-6789

jmaher@ourladysaintpaul.org

BUSINESS MANAGER, OUR LADY OF HOPE:

Joanne DiNatale 978-356-3944

ourlady@ourladysaintpaul.org

BUSINESS MANAGER, SAINT PAUL:

David McLean 978-468-2337

stpaul@ourladysaintpaul.org

PARISH SECRETARY, SAINT PAUL:

Lucy Cronan 978-468-2337

stpaul@ourladysaintpaul.org

RELIGIOUS EDUCATION

OUR LADY OF HOPE: 978-356-3944 EXT. 28

Kindergarten through Grade 11

Elisa St. Clair estclair@ourladysaintpaul.org

SAINT PAUL: 978-468-3617

Grades 1 through 5

Kristen Monahan kmonahan@ourladysaintpaul.org

Grades 6-8

Debra Brown dbrown@ourladysaintpaul.org

Grades 9-10

John Cusolito jcusolito@ourladysaintpaul.org

STAY UP TO DATE THROUGH EMAIL

When important information is sent to registered parishioners, it is conveyed through email. Please let us know when your email has changed.

IMPORTANT REMINDER

Please accompany your child downstairs to the church hall or to restrooms. For their safety, please be sure they are always accompanied by an adult family member. Child safety is everyone's responsibility. Thank you for your cooperation.



COLLABORATIVE MASS INTENTIONS

Saturday, February 17

4:00 pm Vigil— Weekend Mass (OLOH)

Sunday, February 18

7:30 am— Parishioners (SP) *NO MUSIC*

9:30 am— Paul Joseph Dolan (SP)

11:15am— Deceased Members of Rizzo Family (OLOH)

Monday, February 19

9:00 am— Weekday Mass (OLOH)

Tuesday, February 20

9:00 am —Weekday Mass (OLOH)

Wednesday, February 21 No Daily Mass

Thursday, February 22

9:00 am — Weekday Mass (SP)

Friday, February 23

9:00 am — Weekday Mass (SP)

Saturday, February 24

4:00 pm Vigil— Weekend Mass (OLOH)

Sunday, February 25

7:30 am— Weekend Mass (SP) *NO MUSIC*

9:30 am— Andrew & Rita Barada (SP)

11:15am— Weekend Mass (OLOH)

Please contact the parish office to schedule a Mass intention for your deceased loved one.

PRAYER REQUESTS

WE ASK PARISHIONERS TO PRAY...

† For all those who are sick, especially
Kathy Esfahanian, Amy Lombardo, Cameron Cyr,
Kathy Bartlett, Blanche Zak, Mathew Faino, Kim
Donohoe, Mia Angelis, Philip Abodeely, Juliette Carlson,
Cameron Gagnon, Cathryn Lally, Denise Polli, Gerrie
O'Brien, Melissa Faino Palelli, Arline Thornell, Irene
Stackpole, Connie Donovan, Patricia Foley, J. P.
Quinn and all those infected with the Covid-19 virus

† For all our parishioners who are sick, homebound
and those confined to nursing facilities and
hospital

† For the all students and teachers.

† For peace in our world, especially in the Ukraine
and Middle East

† For all the deceased members of our parishes

† For the safety and good health of all missionaries

† For all who serve our country in the Armed Forces,
especially Marine 2nd Lt. Thomas Monahan and
Air Force 2nd Lt. Will Hogan

† For the unborn children

† For all those affected by natural disasters

PLEASE NOTE: In order to keep our prayer list
current, names will remain on the list for
four weeks.

Please resubmit by contacting the parish
office. Names should be submitted by the
individual or immediate family member.



ONLINE GIVING

We offer this convenience to our parishioners and visitors. Online giving is an easy and secure way to make contributions to support our parish. You may contribute using direct withdrawals (ACH) or credit cards. Visa, MasterCard and American Express are all accepted.

SAINT PAUL

If you prefer the convenience of giving your donation online, please call the parish office or enroll online at:
<https://churchofsaintpaul.churchgiving.com/>


Parish envelopes for your weekly donation allows us to keep a record for your tax purposes. If you would like to receive weekly envelopes, please call the parish office.

OUR LADY OF HOPE

To contribute using online giving, simply visit our website:
ourladysaintpaul.org and follow the instructions.
For assistance, call the parish office..

If you make an offering/donation to the collection basket at Mass with Parish (specific) contribution envelopes or put your donation in an envelope writing both Parish name and your name on the front, your donation will be transferred to that Church. Cash donations outside of an envelope will remain in the parish where you made your donation. If you have any questions, call the parish office.

LENTEN FASTING & ABSTINENCE



Fasting	Abstinence
Ash Wednesday Good Friday	Every Friday during Lent
Ages 18-59	Ages 14+



How do we fast?

When fasting, a person is permitted to eat one full meal, as well as two smaller meals that together are not equal to a full meal.

Am I excused from fasting and abstinence?

Those that are excused from fast and abstinence outside the age limits include the physically or mentally ill including individuals suffering from chronic illnesses such as diabetes. Also excluded are pregnant or nursing women.

For more information on fasting and abstinence, visit uscbb.org.

Copyright © 2021, United States Conference of Catholic Bishops, Washington, DC. All rights reserved.

SAINT PAUL PARISH HAPPENINGS

CHILDREN'S LITURGY with Mrs. Monahan February 25 at 9:30 AM Mass

COFFEE & DOUGHNUTS

Please join us for coffee & doughnuts in the church hall following the 9:30 Mass this weekend.

EDGE Summary (Gr. 6-8)

DEAR PARENTS AND FAMILY,

Thank you to all who signed up for the Shrove Tuesday Party - your children who will help out and all the supplies! Many parishioners of the collaborative have submitted RSVPs and knowing that our EDGE families have signed up for everything means so much! Please drop off your ingredients to the hall kitchen and the refrigerator/freezer on the left.

At this Edge Night, we discussed that although none of us are created "bad," temptations and evil do exist. The Edge Night began with a weather game of tag. This was followed by a teaching focused on how God created us with incredible dignity, but because of sin, we struggle to choose good. One of our discussion questions was if you could have one superpower - what would that be. The most common answers may surprise you: (1) teleportation; (2) be invisible; and (3) read minds. We also reflected on our good qualities and drew self portraits.

The Edge Night concluded with a prayer to reflect on God's love.

FAMILY	REFLECTION	QUESTIONS
• What do you like about yourself? How does this trait reflect God's goodness?		
• How do you help yourself see the good in others, even when it is difficult to find?		
• How can our family better see the good in one another?		

https://youtu.be/y81yIo1_3o8?si=U7drNPQ5yuSyio9j

Praying together as a family will build your armor! Please remember that next week we have the Shrove Tuesday Dinner and no class on Ash Wednesday. The following week is school vacation so there will be no classes. Try to encourage your children to make a plan for Lent - what can they give up or do for others during the days of Lent leading up to Good Friday and Easter. Stations of the Cross will be said at Saint Paul's on Friday nights through Lent!

God Bless You,
Debra and the Core Team

SECOND FRIDAY COFFEE AT ST. PAUL'S

Following the second Friday Daily Mass, coffee will be served in the church hall. This will be a wonderful opportunity to meet with parishioners from St. Paul and Our Lady of Hope.

SAINT PAUL KNITTING MINISTRY

DID YOU KNOW... Our St. Paul's Knitting Ministry (consisting of 12 volunteer members) knit baptismal blankets which are gifted to parents during their child's baptism. The group also make blankets and hats which are then distributed to area hospitals to children in need of a **BIG, WARM HUG!** Last year, approximately 150 blankets and 140 baby hats were handed out.



COMING SOON... the Knitting Ministry will hold a **RAFFLE** to help fund the purchase of materials for their ministry. **RAFFLE PRIZE** is a handmade, reversible, Cable Knit Blanket. **RAFFLE Ticket Price** is \$5.00 or 3 for \$10.00 (**CASH ONLY**). **Ticket Sales Start** on Sunday, Feb. 25th (after the 7:30AM and 9:30AM Masses) through Sunday, Mar. 17th, with the last ticket purchase ending after 7:30 AM Mass. **RAFFLE WINNER** will be drawn by Father Brogan on March 17th, after the 9:30 AM Mass, in the Church Hall.

ST. FRANCIS HOUSE CLOTHING DRIVE

Cleaning out closets? Please keep St. Francis House in mind! Kindly donate gently used clothing, such as:

Fresh Threads—*regular everyday clothing*

- Men and Women's coats (bigger sizes preferred)
- Men and Women's sneakers, shoes, boots (no high heels)
- Men and Women's jeans, khakis, cargo pants
- Men and Women's sweatshirts, hoodies
- Men and Women's polos, long sleeve shirts
- Men and Women's t-shirts, sweaters, cardigans
- Men and Women's winter hats
- Men and Women's belts
- Backpacks, duffel bags, reusable bags

Specially marked boxes for your donations are at the church entrances. Together we can make this a huge success for Saint Francis House!

SAINT PAUL MEN'S PRAYER GROUP

St Paul's Men's Prayer Group meets Saturday mornings in the church from 7:30 to 8:30. The meeting includes praying from the Liturgy of the Hours and a discussion of the Sunday readings. Contact the parish office for further details."

SPECIAL COLLECTIONS

February 24-25- CHURCH AROUND THE WORLD

This second collection will support the Church in those underdeveloped areas of the world. Catholic Relief Services (CRS), the Church in Africa and in Central and Eastern Europe and three important national Catholic missions: the Military Archdiocese, Home Missions and the Black and Indian Missions. For more information visit: www.usccb.org

OLOH -EASTER FLOWERS

We will celebrate Easter on March 31, 2024. We will once again memorialize the flowers and plants used around the altar and sanctuary. If you would like to make a donation in memory of a deceased member of a particular family or in someone's memory please follow the process below:

Using a plain white envelope, write "**Easter Flowers**" on it. **Please print (clearly)** the name of the person, couple (mother/father) or the name of the family you want remembered on the outside of the envelope; or you may also include the names on a piece of paper inside the envelope. The donation request is **\$25.00 (or more if you desire)** per name, couple or family.

Flower request envelopes can be placed in the weekend collection basket, incoming mail bin on the rectory porch or mail them to: **Our Lady of Hope, 1 Pineswamp RD, Ipswich**

We will publish the names of all those in whose memory the flowers and plants are intoned in our Easter Bulletin. The **deadline** to have your intentions printed in the Easter Bulletin will be **Wednesday, March 20, 2024**. This is due to early submission of bulletin for Holy Week. Thank you in advance.

May these flowers assist us in our
"Alleluia to the Risen Lord"

OLOH SPECIAL COLLECTIONS:

FUEL COLLECTION

The Fuel collection is a great help in funding the anticipated cost of the parish heat and utilities this winter. This collection will continue to be taken up during the month of February. Donations can be mailed, put on rectory porch or dropped in the weekend collection baskets.

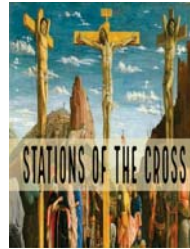
Thank you in advance for your generosity to this important collection that supports Our Lady of Hope Parish.

GRAND ANNUAL COLLECTION

The 2023-2024, Grand Annual Collection is well underway. If you have not made your donation yet, there are extras on the exit tables of the Church and rectory porch. We are grateful to all who have already generously contributed to this important collection. As of this past weekend we have received \$85,289.00 in donations.

The Grand Annual is a vital collection for the financial needs of the Parish. The Grand Annual will help us to continue to take care of the additional costs of running the Parish and keeping up with necessary repairs.

STATIONS OF THE CROSS



Lenten Stations of the Cross Fridays of Lent

Stations of the Cross will be held at **6:30pm on Friday evenings during Lent.**

The Stations of the Cross devotion commemorates Jesus Christ's Passion and Death. The 14 devotions, or stations, focus on specific events of His last day, beginning with His condemnation. The stations are commonly used as a mini pilgrimage as the individual moves along from station to station. At each station, the individual recalls and meditates on a specific event from Christ's Passion. Specific prayers are recited, then the individual follows along to the next station until all 14 are complete.

ADORATION OF THE BLESSED SACRAMENT



On the First Friday of the Month following the 9:00 am Mass there will be Adoration of the Blessed Sacrament and Confession until 10:00 am at Saint Paul Parish, Hamilton.

NORTH SHORE SACRED HARP GROUP

The North Shore Sacred Harp group will next on **Sunday February 18th**, in the lower church hall at Our Lady of Hope Church, from **2:00 - 4:30 p.m.**

Come join us as we meet in a square to sing hymns dating from the 18th-21st century, in four part a capella harmony. No previous experience required. Loaner hymnals will be available. Free will offering to help defray building upkeep.

If you are curious about shape note music, we suggest googling "Sacred Harp" and watching a few YouTube videos, and/or exploring fasola.org, our national website. Our North Shore group has a presence on Facebook. For further details contact George Howe 978-356-3252 or gehowe@comcast.net

WORLDWIDE MARRIAGE ENCOUNTER

1 Peter 3:18: "Beloved: Christ suffered for sins once, the righteous, that he might lead you to God. Put to death in the flesh, he was brought to life in the spirit." Let your marriage be filled with life in the Holy Spirit. Learn the five tools for a more fulfilling marriage by signing up and attending a Worldwide Marriage Encounter Experience. You will be glad you did! You can find one by looking up WWME.org. Some of the dates to sign up are:

March 15-17, 2024 in Upton, MA
 April 26-28, 2024 (non-residential weekend) in Connecticut
 June 21-23, 2024 in Huntington, NY

Worldwide Marriage Encounter sponsors a variety of in-person and virtual marriage experiences, some on weekends and some on seven weekdays. Couples explore their relationship with each other, God, and the Church. Registration is limited; there is a \$100 application fee. For more information or to apply, call Joe & Ginny Vattelle at 978-870-5646 or <https://www.mema.org/>.

Prayer for our Country...

God our Father, giver of life, we entrust the United States of America to your loving care. You are the rock on which this nation was founded. You alone are the true source of our cherished rights to life, liberty, and the pursuit of happiness. Reclaim this land for your glory and dwell among your people. Send your Spirit to touch the hearts of our nation's leaders. Open their minds to the great worth of human life and the responsibilities that accompany freedom. Remind your people that true happiness is rooted in seeking and doing your will. Through the intercession of Mary Immaculate, patroness of our land, grant us the courage to reject the "culture of death."

We ask this through Christ Our Lord. Amen.

PROTECTING GOD'S CHILDREN

All volunteers who minister in the Archdiocese must attend the Protecting God's Children and receive the Code of Conduct form. In addition, all current volunteers and new volunteers must complete a CORI Form. Those who need to follow this requirement are anyone who helps in building our church in any way. This list of volunteer includes: staff, teachers, assistants to religious education, lectors, eucharistic ministers, ushers, Finance and Pastoral Council members, etc.

Please consider sharing your gifts and talents in our new collaborative at Our Lady of Hope and St. Paul's by attending this training to be ready to serve.

Please sign up by logging onto:

[Go to https://www.virtusonline.org/](https://www.virtusonline.org/)

- Click on "First-Time Registrant"
- Click on "Begin the registration Process"
- From the pull-down menu, choose "Boston, MA (Archdiocese)," ONLY
- When asked, "Have you previously registered with VIRTUS Online?" click "NO"
- Create a username and password when asked to do so and click "Continue"
- Fill in all the required fields for contact information on the next screen and click continue
- From the pull-down menu for "Location," choose "Our Lady of Hope Ipswich " or "St. Paul Hamilton" or wherever else they are coming from
- When the roles appear, choose a primary role and an additional role
- Add a Title (what you do for parish/school) in the box at bottom and click "Continue"
- On the next page, you may choose YES or NO depending on whether you want to associate your name with an additional school or parish
- Answer the four Yes/No questions on the next page and click "Continue"
- When asked "Have you already attended a VIRTUS Protecting God's Children Session?" answer NO.
- On the next page, choose date and church to attend Protecting God's Children for Adults"

Confirm and you are done!

If you register for a training, please let us know once completed and forward a copy of your completion certificate to the rectory office. Thank you

IPSWICH KNIGHTS OF COLUMBUS



The Knights of Columbus is the world's largest Catholic fraternal service organization. It was founded by the Venerable Father Michael J. McGivney in New Haven, Connecticut, in 1882, and named in honor of the navigator Christopher Columbus. Originally serving as a mutual benefit society to low-income immigrant Catholics, it developed into a fraternal service organization dedicated to providing charitable services, promoting Catholic education, and actively defending Catholicism in various nations.

The Knights of Columbus is not just a fraternity in name. It is a brotherhood of Catholic men who each play a part in improving the world around them, one community at a time. They are dedicated to upholding the principles they cherish: Charity, Unity, and Fraternity. The Knights stand together in faith and lend their support to the parish, home, and fellow Knights. From charity for worldwide causes, to helping closer to home with volunteer activities, to a top-rated insurance program that protects those closest to you, the Knights make the most of its brotherhood. All men in the parish are welcome and should consider joining the Knights of Columbus. We'd love to have you! For more information on joining the Knights, please contact Jim Foley Grand Knight of Ipswich Council 498 at: Jamesfoley2233@gmail.com.



Knights of Columbus

The Open Door Food Drive

The Knights of Columbus will be sponsoring a food drive for The Open Door Food Pantry in Ipswich. Please leave your donations near the front entrance of Our Lady of Hope Parish in the food donation box. The Knights will be transporting the food once a week and they

Thank you for your donation.

Most needed items at

The Open Door (no glass!):

Peanut Butter • Canned Tuna, Chicken &

Turkey • Healthy Snack Items •

100% Juice/Juice Boxes • Breakfast Cereal •

Hearty Soups • Canned Vegetables & Fruits

• Spaghetti Sauce • Macaroni & Cheese •

Rice, Noodles, & Pasta • Cake, Muffin &

Pancake Mix

PARISH MINISTRY CONTACTS

CATHOLIC WOMEN'S CLUB

Bonni Berkowitz, President | 617-549-2744
berky000@gmail.com

MUSIC MINISTRIES

John Maher | 978-500-6789
jmaher@ourlady saintpaul.org

SAINT VINCENT DE PAUL

James McCarthy, President | 978-992-6151

KNIGHTS OF COLUMBUS

James Foley | 978-360-2799

**For more information, contact the parish office.
 Consider sharing your gifts and talents.**

PARISH ROSARY GROUP -OUR LADY OF HOPE

Praying the Rosary for those affected by abortion

Please join us every Tuesday and thereafter at 7 PM in the upper Church at Our Lady of Hope for reciting the Rachel Rosary, intercessory prayer for victims of post-abortion syndrome. Rachel Rosary is a positive and appropriate means of praying for those affected by abortion.

All are welcome to attend each week or as you are able.

MEN'S GROUP AT OUR LADY OF HOPE

The Men's Group invites you to come join them on Saturday mornings from 7:15-8:30 am in the church hall at Our Lady of Hope for light refreshments and Christian fellowship in an easy-going, informal atmosphere.

KNITTING MINISTRY—TIME CHANGE



St. Paul's Knitting Ministry knits baptismal blankets for St. Paul's and baby blankets and hats for Project Linus which are donated to local hospitals. If you knit, crochet or quilt and would like to join us, we meet generally on **the first Saturday of the month from 1PM to 3PM in St. Paul Church hall.**

HOMEBOUND

If you or someone you know is homebound and wishes to receive Holy Communion, please call parish office to make arrangements.

ADULT CHOIR

Music Director John Maher is looking for choir members to sing at the 9:30am Mass at St Paul's on Sundays, or the 4pm Mass at Our Lady of Hope on Saturdays. Time commitment is minimal. Whether you have sung with a choir in the past or have never done it before, all are welcome! Reach out to John at jmaher@ourlady saintpaul.org or call 978-500-6789.

COLLABORATIVE PARISH COUNCIL MEMBERS

Bonni Berkowitz	James Foley
Joanne Bialek	JoAnne Kelleher
Richard & Diane Bostrom	Linda Murphy
Pat Donahue	Alana Mitchell
Stephen Dowd	Phil Monahan
Martha Driscoll	Jim Moynihan

ST. VINCENT DE PAUL NEWS

In the tradition of its founder, [Blessed Frédéric Ozanam](#), and patron, [St. Vincent de Paul](#), the Society of St. Vincent de Paul is a Catholic lay organization inspired by Gospel values. We join together to grow spiritually by offering person-to-person service to neighbors in need.

As a reflection of the whole family of God, members, known as Vincentians, come together from every age, every race, and every income level and share our blessings of time, talent, and treasure with those who need help and hope. Organized locally, Vincentians witness God's love by embracing all works of charity and justice. We make no distinction in those we serve because, in them, Vincentians see the face of Christ.

Our local chapter of the Saint Vincent DePaul Society is a collection of parishioners inspired by Gospel values, growing in holiness, and building a better world through personal relationships with and serving the people in need in our community. We join to grow spiritually by offering person-to-person service to those in need and suffering. **We meet face-to-face with those seeking assistance, preferably in their home.** During these home visits, we bring hope, prayer, and financial resources to neighbors in need through assistance with rent, food, clothing, and other emergency needs.

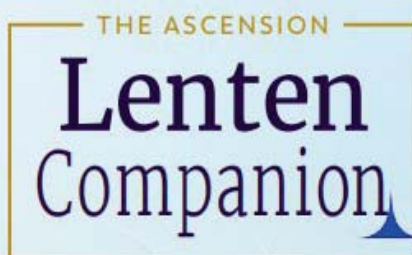
Here are some recent examples of the help we have provided thanks to your generous Poor Box donations; we assisted a woman in a housing transition suffering from several health challenges with a week's stay at a local Inn. We've provided new mattress sets and sheets to a young family in need, and we have assisted a single mother and her son with a deposit for electricity as they return to Ipswich from Gloucester, hoping to find a better environment for their family life. We're assisting another single mother who has had to deal with the requirements of a special needs preschool child and, due to not being able to work full time, fell behind on her electric bills, and we've assisted a recently widowed senior with rental assistance while she deals with unexpected expenses.

We appreciate the opportunity to represent our two parishes in this work of charity that we do on behalf of all parishioners. We provide a person-to-person Christ-centered service that encompasses listening, empathizing, and bringing a prayerful approach to each encounter. We meet in the homes of each recipient, representing ourselves as members of our Hamilton/Ipswich/Wenham Catholic Community, seeking to bring support and the joy of Christ, non-judgmentally, to those in need.

Thank you again for thinking of those less fortunate and donating to the Poor Boxes on your way out of Our Lady of Hope Church. Please contact us if you know of anyone in Ipswich/Hamilton/Wenham who could benefit from a visit from your SVPD Society. Also, please visit our website for additional details: <https://svdpipswich.blogspot.com/>. All are welcome to participate in this mission as we meet at 7 PM on the first Monday night of every month in the OLVH parish hall.



Remember God's will in yours... When you leave a bequest to the Church in your will or estate plan, you express your commitment to the future of your parish. You also return some of the blessings God gave to your life and leave an eternal message of what is important to you. Please consider including Our Lady of Hope Parish and Saint Paul Parish when preparing your will. For more information contact Fr. Brogan or call/email the parish office.



Walking with Jesus to Jerusalem Join us!

The Ascension Lenten Companion program includes an inspirational journal and engaging videos by Fr. Mark Touns. Join us as we walk with Jesus on his journey to Jerusalem and encounter his love in a radically new way.



DATE | TIMES | LOCATION

Mondays of Lent, beginning February 12th! Mornings: 9:30 - noon (after morning Mass) Evenings: 6:30 - 8pm
Both sessions at Our Lady of Hope

FOR MORE INFORMATION

Books cost \$13.50
Please reach Elisa St. Clair to sign up!
estclair@ourlady saintpaul.org or
978-356-3944 x 28

Join us for Lent! **RSVP** now for
Mondays, Morning or Evening Session!



ADORE



**Adoration
Confession
Guest Speaker
Live worship music by
Mike McDuffee**

St. Lucy Church
254 Merrimack St
Methuen, MA

**Wednesday, February 28th
6:00-8:00 PM**



Mike McDuffee has been leading worship in the Catholic Church since he was 12 years old. He currently lives in Lynnfield with his wife and four children and serves as the campus minister of St. Mary's School in Lynn, MA.

**Free Will
Offerings
Accepted**



ShelfGenie®
EVERYTHING WITHIN REACH®
a neighborly company

Custom Pull-Out Shelves
for your existing cabinets and pantry.
Call for Your **FREE** Design Consultation
(855) 625-9032

*Limit one offer per household. Must purchase 5+ Classic/Designer Pull-Out Shelves. EXP 03/31/24. Independently owned and operated franchise. ©2023 ShelfGenie SPV LLC. All rights Reserved.



PORTABLE OXYGEN FOR YOUR ON-THE-GO LIFESTYLE

CLAIM YOUR
14-DAY
RISK-FREE
TRIAL¹

Call us toll-free at
1-888-485-5350

¹14-day risk-free trial- Return within 30 days of purchase for a full refund of purchase price.

PM230469 EN_EX_USA | Rx Only. © 2023 Inogen, Inc.

301 Coromar Drive, Goleta, CA 93117

Inogen® is a trademark of Inogen, Inc. The usage of any Inogen, Inc. trademark is strictly forbidden without the prior consent of Inogen, Inc. All other trademarks are trademarks of their respective owners or holders.



The Bath or Shower You've Always Wanted
IN AS LITTLE AS A DAY



\$1000 OFF*

AND

**No Payments & No Interest
For 18 Months****

OFFER EXPIRES 3/31/2024

BCI BATH & SHOWER

CALL NOW (844) 300-2419

*Includes product and labor; bathtub, shower or walk-in tub and wall surround. This promotion cannot be combined with any other offer. Other restrictions may apply. This offer expires 3/31/24. Each dealership is independently owned and operated. **Third party financing is available for those customers who qualify. See your dealer for details. ©2024 BCI Acrylic, Inc.

EXCLUSIVE MONEY SAVING OFFER

0 DOWN | 0 PAYMENTS | 0% INTEREST

FOR 2 YEARS

AND

BUY 2 WINDOWS GET 2 FREE!

WINDOW NATION

SCHEDULE YOUR FREE IN-HOME CONSULTATION TODAY!

*Offer Valid on Potomac and ComfortSmart Models. 4 Window Minimum. Cannot be combined with any other offer. Excludes labor. Based on 10 Georgetown model. Double hung/sliding windows with standard installation. Subject for Credit Approval. Offer Ends 12/31/24. MA HIC #197968

Call (855) 919-2625

We remain true to our vision to positively affect
the lives of every person, business and organization
within the communities we serve.



INSTITUTION FOR SAVINGS

BUILDING STRONGER COMMUNITIES TOGETHER SINCE 1820.

978-462-3106 • institutionforsavings.com



clergytrust healthier priests.
stronger communities.

Fr. Tom Nestor has served as pastor
at the Collaborative Parishes of
Resurrection and Saint Paul in
Hingham for the past ten years, and
previously served at St. Eulalia's in
Winchester for 17 years. A Harvard
graduate and native of West Roxbury,
Fr. Nestor is known for fostering a
sense of community wherever he goes.

donate at
clergytrust.org

—OR—

SCAN HERE for
Venmo, Google/
Apple Pay, PayPal
via Givebutter.



PROTECT

WHAT MATTERS MOST

Whether you are home or away,
protect what matters most from
unexpected power outages with a
Generac Home Standby Generator.

\$0 MONEY DOWN + LOW MONTHLY PAYMENT OPTIONS

Contact a Generac dealer for full terms and conditions



REQUEST A FREE QUOTE

**CALL NOW BEFORE THE
NEXT POWER OUTAGE**

(617) 841-4985

FREE 7-year Extended Warranty* – A \$735 Value!

*To qualify, consumers must request a quote, purchase,
install and activate the generator with a participating
dealer. Call for a full list of terms and conditions.

GENERAC

LeafFilter
GUTTER PROTECTION

**CLOG-FREE GUTTERS
FOREVER**

BEFORE LeafFilter

AFTER LeafFilter



EXCLUSIVE LIMITED TIME OFFER!

15% OFF + 10% OFF + 0%

YOUR ENTIRE
PURCHASE

SENIORS &
MILITARY!

APR FOR
24 MONTHS**



Promo Code: 285

FREE GUTTER ALIGNMENT + FREE GUTTER CLEANING*



**CALL US TODAY FOR
A FREE ESTIMATE**

1-877-319-0949

Mon-Thurs: 8am-11pm, Fri-Sat: 8am-5pm, Sun: 2pm-8pm EST

A COMPANY OF
LEAFHOME

**Wells Fargo Home Projects credit card is issued by Wells Fargo Bank, N.A., an Equal Housing Lender. Special terms for 24 mo. apply to qualifying purchases of \$1,000 or more with approved credit. Minimum monthly payments will not pay off balance before end of promotional period. APR for new purchases is 28.99%. Effective - 01/01/2023 - subject to change. Call 1-800-431-5921 for complete details. The leading consumer reporting agency conducted a 16 month outdoor test of gutter guards in 2010 and recognized LeafFilter as the "#1 rated professionally installed gutter guard system in America." *For those who qualify. One coupon per household. No obligation estimate valid for 1 year. Offer valid at time of estimate only. See Representative for full warranty details. Manufactured in Plainville, Michigan and processed at LMT Mercer Group in Ohio. AR #0366920922, CA #1035795, CT #HIC 0649905, FL #CFC0356678, IA #C127230, ID #RCE-S1604, LA #559944, MA #176447, MD #MHIC148329, MI #2102212986, #262000022, #262000403, #2106212946, MN #IR731804, MT #226192, ND 47304, NE #50145-22, NJ #13VH09553900, NM #A08693, NV #H-19114, H-52229, OR #218294, PA #PA069383, RI #GC-41354, TN #7656, UT #10783658-5501, VA #2705169445, WA #LEAFNW822JZ, WY #WV056912.

MORRIS FUNERAL HOME

45 North Main Street • Ipswich, MA (978) 356-2422

John A. Morris
Owner &
Parishioner

www.morrisfh.com



22 Brown Square, Ipswich
(Former Site of Barton Stone)
Monuments - Markers - Memorial Plaques
Expert Cemetery Lettering & Monument Cleaning

Rita Parent 978-356-2334
1889memorials@verizon.net

Memorial Ads Available

617-779-3771



EXCEPTIONAL KIDS
LIMITLESS POSSIBILITIES
Immaculate Conception School, Newburyport

- STEM
- Community Service
- Pelicans Pre-K Program

ICS Admissions

MASCONOMET
Healthcare Center
A MEMBER OF THE WHITTIER HEALTH NETWORK:
DEDICATED TO YOUR WELL-BEING

A tradition of excellence since 1999!
Short-term & Extended Rehabilitation
Subacute, Respite & Long-term Care
Accepts HMO's, Medicare & Commercial Insurance

123 High Street, Topsfield, MA (978) 887-7002 www.whittierhealth.com

**AD SPACE
AVAILABLE**
617-779-3771

BECOME DEBT FREE IN AS LITTLE AS 24-48 MONTHS

If you owe more than \$10,000 in credit card or
other unsecured debt, see how we can help.

Call today:

+1 (866) 605-1934



NATIONAL
— DEBT RELIEF —



1640
Hart House
Elegant Country Dining

**Closed Mondays
& Tuesdays**
*We will not be serving lunch or
brunch during this time*

Dinner Hours
Wednesday & Thursday
4:30-8
Friday & Saturday
4:30-9
Sunday
4-7:30

Function Rooms Available
51 Linebrook Road
Ipswich, MA 01938
978.356.1640

ABC Medical
Psychiatric Services for Children & Adults
833-394-7998 / www.abcmmedical.com

841 Main Street
Tewksbury, MA 01876
(978) 851-9103

Rosaries from Flowers
*"Handmade from the Flowers
of your Loved One"*
www.rosariesfromflowers.com

Windhill REALTY, LLC
- Fellow Parishioner -
Toni Riddle CR
Real Estate Advisor / REALTOR®
978-233-2832
triddle@windhillrealty.com
16 Market Street • Ipswich
www.windhillrealty.com

**A Help Button Should
Go Where You Go!**

"Hello, this is
MobileHelp. How
may I assist you?"

Unlike "stay-at-home" emergency
systems MobileHelp protects you:

Places where your Help Button will work	MobileHelp	Traditional Help Buttons
At Home	✓	✓
On a Walk	✓	✗
On Vacation	✓	✗
At the Park	✓	✗
Shopping	✓	✗

**GET OUR SPECIAL
OFFER NOW:**

- ✓ **FREE EXPEDITED SHIPPING***
- ✓ **FREE ONE MONTH SERVICE***
- ✓ **50% OFF AUTO FALL DETECT***
- ✓ **plus FREE EQUIPMENT TO USE!***

MobileHelp Features:

- Simple one-button operation
- Affordable service
- Amplified 2-way voice communication
- 24/7 access to U.S. based emergency operators
- GPS location detection
- Available Nationwide

**OUR BEST
OFFER EVER!**
From
\$19.95*
/month

MobileHelp
1-855-444-3698

*For a limited time - promotions available for select systems and subscription plans, please call for specific details. Offers are valid for new customers and for the first year of service and cannot be combined with any other offers. \$19.95 is the monthly subscription price for a MobileHelp Classic (at home only) system. There is a one-time \$49.95 processing fee to subscribe to this plan. Equipment shown is the MobileHelp DHD (at home and on the go) system available at a higher monthly cost. Most equipment is included at no cost while actively subscribing and must be returned upon cancellation. Free one month of service offer valid with purchase of Annual plan and includes month 13 at no additional charge. Refer to terms and conditions for specific details. Depending on the promotion chosen, you may receive an additional savings of \$5.00 off the \$11 retail price of Fall Detection service. After first year, Fall Detect pricing reverts to discounted price of \$8.25/month when combined with MobileHelp Connect Premium. Fall Detection does not detect 100% of falls. If able, users should push their help button when they need assistance. Fall detection is not intended to replace a caregiver. MobileHelp is a registered trademark, patented technology. Current GPS location may not always be available in every situation on the cellular network at all times. Expedited shipping offer is for Annual plans made prior to 3 PM EST Mon-Fri. Expedited shipping is standard 2-day - no deliveries on Saturdays/Sundays or to Hawaii or Alaska. Shipping delays may occur due to situations beyond our control. PF-SPAD205111658

Ultimate Vitamins Plus

**Empowering your health!
Diverse Selection of
Health Essentials**

10% OFF
your first purchase

978-539-8027
106 S. Main Street, Middleton
www.ultimatevitaminsplus.com